

STUDENTSFIRSTNY ANALYSIS:

**MAYOR DE BLASIO'S
SCHOOLS PERPETUATE
INEQUALITY**

AUGUST 2015

Results from the 2015 3rd-8th grade New York State ELA and math tests confirm that little progress has been made during Mayor de Blasio's first full year in control of New York City's schools. Students citywide saw an increase in proficiency of just two percentage points on the state English exams and one percentage point in math, meaning that **the same proportion – roughly two-thirds – of the city's children remain off-track**. Worse, no improvement was seen in the number of students scoring in the Level 1 range – well below proficient in standards for their grade – in both ELA and math. The number of failing schools remains high and the Mayor's Renewal and Community Schools interventions have done little to reverse trends; a shocking 9 out of 10 students in these schools are not being effectively taught to read and do math. The lowest performing schools are in the communities that need quality the most. **NYC public schools perpetuate inequality and deny low-income students the opportunity they deserve**. Mayor de Blasio has rejected evidence of what works, instead favoring initiatives that don't rock the boat. The following analysis shows conclusively: radical change is needed.

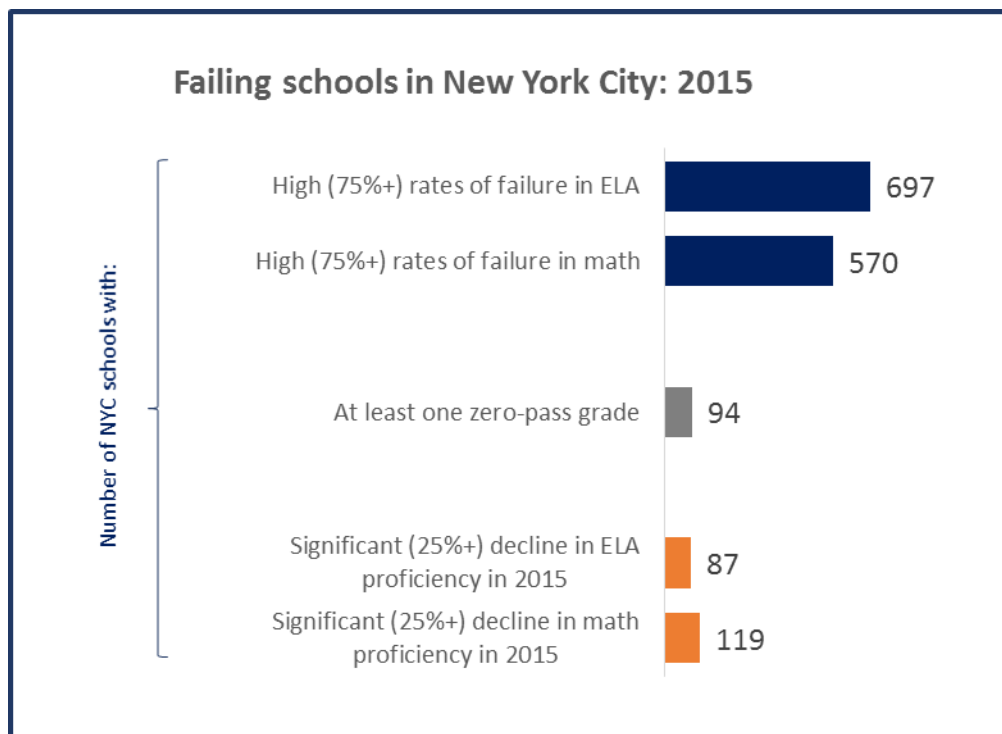
Students Remain Off-Track



Too Many Failing Schools

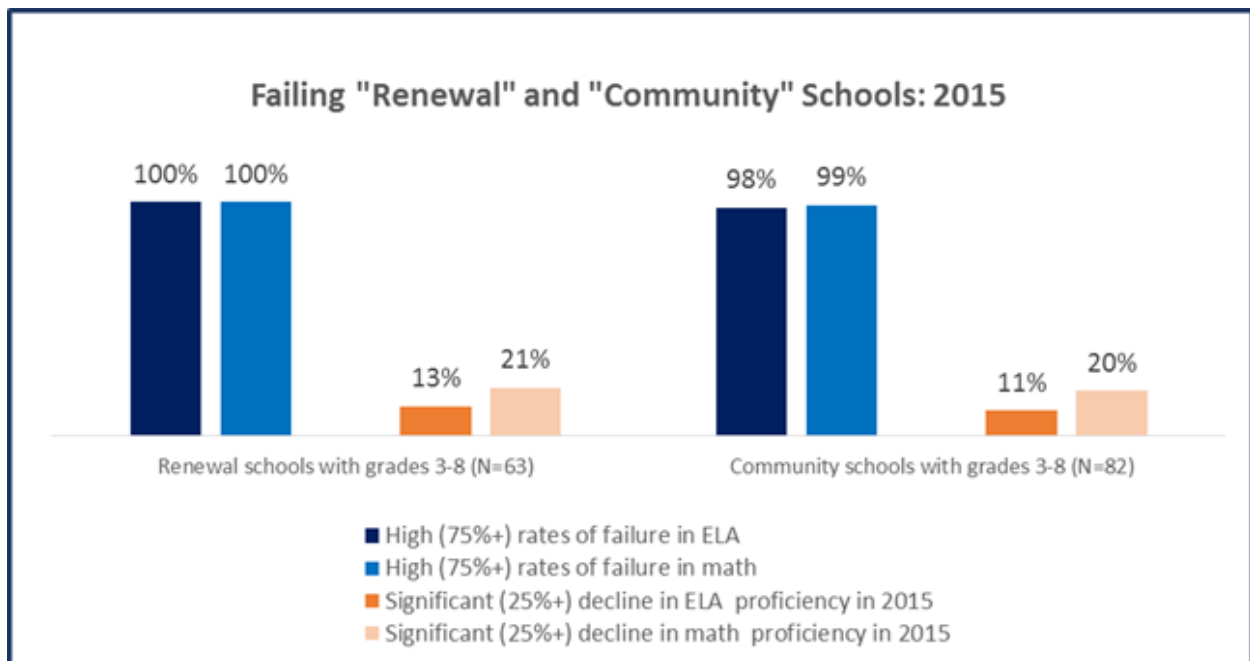
The lack of progress, while disappointing, is not at all unexpected given [Mayor de Blasio's Inadequate Education Agenda](#). It is no surprise that the Mayor's ill-conceived school quality policies for the 2014-15 school year have played out in the form of lackluster test scores for New York City's students. Despite rhetoric to the contrary – including the mystifying proclamation that the test results reflected “a very good day for New York City” – there are too many failing schools citywide.

A whopping **570 out of 1,283 schools** in New York City with students in grades 3-8 had failure rates of 75% or higher for math this year, meaning that a large majority of their students are performing below grade level. The number of failing schools is even higher when looking at ELA proficiency. **Ninety-four schools across the city saw at least one grade in which not a single student passed the New York State ELA or math exam** in 2015 (see Appendix A). Of these, 48 logged at least one zero-pass grade in 2014 as well. Further, dozens of schools had substantial declines in math and ELA proficiency from 2014 (Appendix B). This is not what progress looks like.



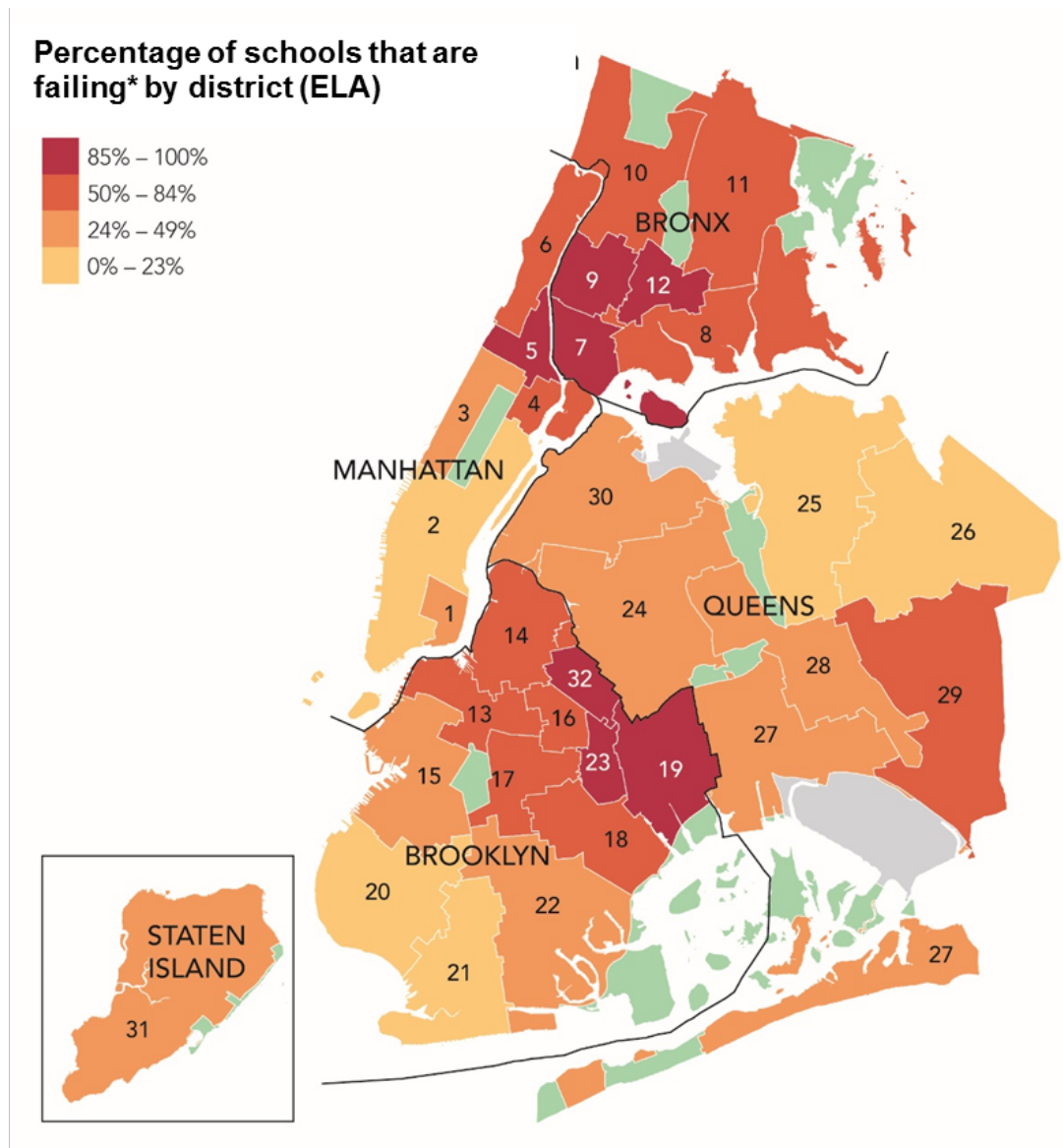
Ineffective School Turnaround Policies

Especially concerning are the dismal results from Mayor de Blasio's flagship school turnaround programs: Renewal Schools and Community Schools. While lower average scores should be expected for schools in these programs, their low performance on the 2015 state exams is shocking. Every school included in the Renewal program – which is entering year two out of three next month – had failure rates of 75% or more school-wide in both ELA and math. **That's more than three-quarters of all students reading and doing math below grade level in the schools getting the most attention from the administration.** Further, many Renewal Schools posted a significant decline in proficiency rates over 2014 levels. Similar patterns were seen for schools included in the Community Schools program, which overlaps heavily with the Renewal program. A shocking 9 out of 10 students in these schools are not being effectively taught to read and do math. Elevating struggling schools to the level of quality New York City's students deserve will require far more than the incremental gains sought by the current administration. From the 2015 test scores, it's clear that Mayor de Blasio's school turnaround policies are not enough.

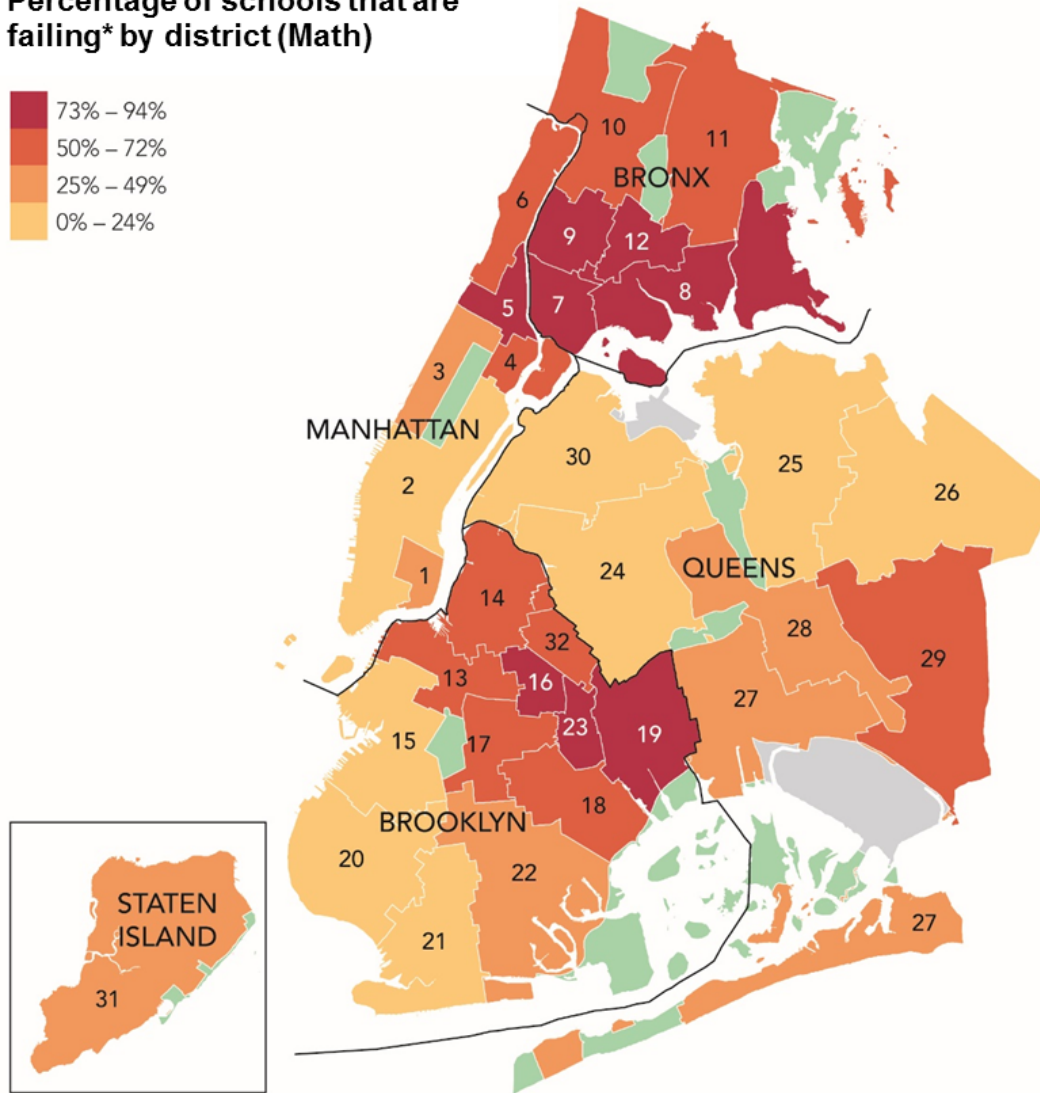
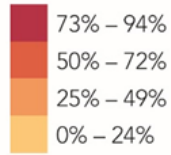


Uneven Distribution of Failing Schools

The lowest-performing schools – those with a 75% or greater failure rate in ELA or math – **are concentrated in the neediest communities within New York City, the South Bronx and eastern part of Brooklyn.** Students in these districts qualify for free or reduced price lunches and Human Resources Administration (HRA) benefits at high rates. Parents in these poor-performing districts send their children to school with the hope that they will get the best education possible. In reality, the state test results show that for many of these parents, there are few good schools to rely on.



Percentage of schools that are failing* by district (Math)

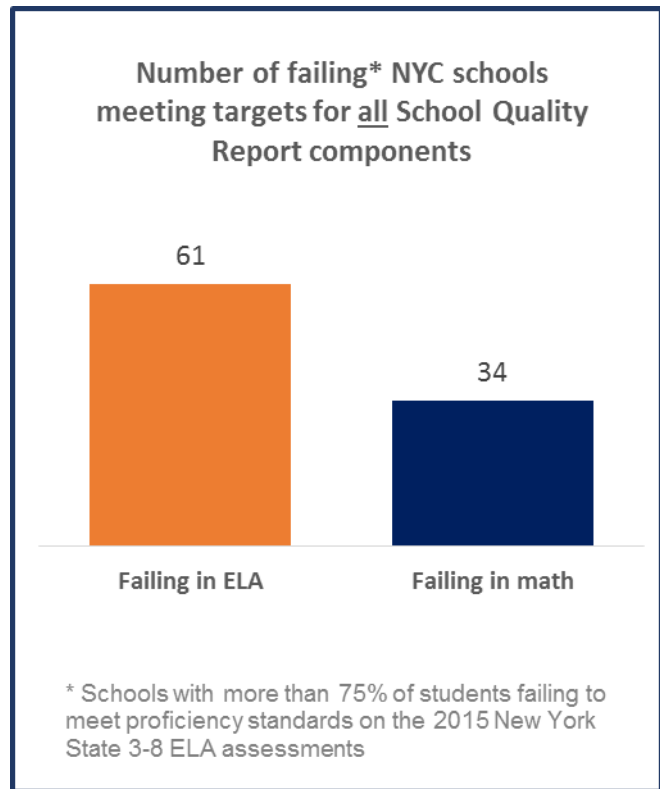


* Schools with more than 75% of students failing to meet proficiency standards on the 2015 New York State 3-8 math assessments

Lack of Transparency

The state of schools in New York City is made worse by a deliberate lack of transparency around educational quality. Soon after taking office, de Blasio jettisoned the School Progress Reports - with easy-to-understand A-F grades – replacing them with the more qualitative and harder-to-interpret School Quality Reports. In addition to being more difficult to understand, the new School Quality Report ratings are lenient to the point of being meaningless.

Citywide, over 75% of elementary and middle schools with a recent Quality Review rating were deemed “Proficient” or “Well Developed” in 2014 – despite low pass rates on state tests. **Dozens of schools that appear to be of high quality based on the 2014 School Quality Reports have astronomical rates of failure on ELA and math state exams** (see Appendix C and D). Not only do parents have few high-quality schools to choose from, it is increasingly difficult for them to have objective measures of school quality.



Conclusion

The new state test score results point to significant gaps in school quality across New York City that cannot be addressed without major systemic reforms. Sadly, Mayor de Blasio continues to fail our students by ignoring key policies – such as teacher quality and school choice – that have the potential to elevate the quality of schools for all of New York City’s students. As long as the educational leaders of our city continue to cater to the interests of everyone except those who truly matter – NYC parents and students – we should not expect anything to change.

Appendix A: New York City schools with any “zero-pass” grade in 2015

	School Name	Overall School Proficiency in ELA (2015)	Overall School Proficiency in Math (2015)	More than 1 “Zero-Pass” Grade in 2015	At Least 1 “Zero-Pass” Grade in Both 2014 & 2015
1	Ps 15 Roberto Clemente	5.4%	12.1%		X
2	Technology, Arts and Sciences Studio School	10.3%	5.1%		
3	Henry Street School for International Studies	2.8%	2.7%	<input type="checkbox"/> X	X <input type="checkbox"/>
4	47 American Sign Language and English Lower School (The)	31.8%	22.7%		
5	Life Sciences Secondary School	14.3%	0.0%	<input type="checkbox"/> X	X <input type="checkbox"/>
6	Ps 149 Sojourner Truth	8.0%	6.6%	<input type="checkbox"/> X	X
7	Ps 191 Amsterdam	11.7%	10.8%		
8	Stem Institute of Manhattan	4.9%	5.0%	<input type="checkbox"/> X	
9	Ms 256 Academic and Athletic Excellence	16.8%	6.9%		<input type="checkbox"/> X
10	Wadleigh Secondary School for the Performing and Visual Arts	0.0%	0.0%	<input type="checkbox"/> X	<input type="checkbox"/> X
11	Frederick Douglass Academy Ii Secondary School	18.8%	10.6%		
12	Ps 50 Vito Marcantonio	4.9%	7.3%		<input type="checkbox"/> X
13	Ps 206 Jose Celso Barbosa	12.7%	25.7%		<input type="checkbox"/> X
14	Global Neighborhood Secondary School	8.0%	4.9%		
15	Ps 92 Mary Mcleod Bethune	13.1%	15.5%		
16	Ps 194 Countee Cullen	7.1%	5.5%		<input type="checkbox"/> X
17	Knowledge And Power Prep Academy Iv	8.9%	1.7%		<input type="checkbox"/> X
18	Urban Assembly Institute for New Technologies	5.7%	4.6%		<input type="checkbox"/> X
19	New Design Middle School	6.3%	1.6%		
20	Academy for Social Action-A College Board School	14.3%	0.0%		<input type="checkbox"/> X
21	Choir Academy of Harlem	0.0%	0.0%		<input type="checkbox"/> X
22	Is 218 Salome Urena	8.9%	5.9%		
23	Ms 326 Writers Today & Leaders Tomorrow	12.5%	8.1%		
24	Ms 328 Manhattan Middle School for Scientific Inquiry	2.6%	3.5%		
25	Harbor Heights	0.0%	5.9%	X <input type="checkbox"/>	X

26	Ps 5 Port Morris	8.6%	7.3%		
27	Ps/Ms 29 Melrose School	8.7%	9.5%		X <input type="checkbox"/>
28	Ps 65 Mother Hale Academy	8.7%	5.3%		X <input type="checkbox"/>
29	Performance School	6.3%	4.6%		
30	Hostos-Lincoln Academy of Science	12.4%	4.8%		X
31	Ms 301 Paul L Dunbar	3.2%	2.6%		X
32	Bronx Mathematics Preparatory School (The)	7.9%	2.7%		X
33	Soundview Academy for Culture and Scholarship	15.2%	15.9%		X <input type="checkbox"/>
34	Mott Hall Community School	16.8%	11.8%		X
35	Antonia Pantoja Preparatory Academy	16.4%	8.5%		
36	Jhs 145 Arturo Toscanini	5.5%	3.1%		
37	Kappa	23.9%	34.0%		X
38	Is 219 New Venture School	1.1%	1.0%		X <input type="checkbox"/>
39	New Millennium Business Academy Middle School	5.6%	3.8%		
40	Eagle Academy for Young Men	11.1%	2.9%		X <input type="checkbox"/>
41	Urban Assembly School for Applied Math and Science	7.6%	18.4%		X <input type="checkbox"/>
42	New Directions Secondary School	3.4%	1.1%	<input type="checkbox"/> X	X
43	Is 206 Ann Mersereau	2.4%	5.8%		
44	East Fordham Academy for the Arts	8.7%	0.9%		
45	Bronx Green Middle School	10.7%	11.0%		
46	Ps 212	9.3%	16.1%		X
47	Ms 113 Ronald Edmonds Learning Center	15.6%	7.1%		
48	Dr Susan S Mckinney Secondary School of the Arts	9.6%	5.9%		
49	Ps 270 Johann Dekalb	8.6%	10.3%		X
50	Ps 305 Dr Peter Ray	3.4%	3.3%		X
51	Ms 596 Peace Academy	2.4%	9.8%	X <input type="checkbox"/>	X <input type="checkbox"/>
52	Ps 147 Issac Remsen	15.4%	21.3%		
53	Ms 582	20.5%	4.1%		
54	Urban Assembly School for the Urban Environment (The)	0.0%	12.5%	<input type="checkbox"/> X	X <input type="checkbox"/>
55	Lyons Community School	5.6%	1.2%	<input type="checkbox"/> X	

56	Ms 442 Carroll Gardens School for Innovation	17.9%	13.4%		X <input type="checkbox"/>
57	Brooklyn Secondary School for Collaborative Studies	32.0%	2.0%	<input type="checkbox"/> X	
58	Upper School At Ps 25	12.2%	5.1%		X
59	Ms 584	5.7%	5.7%		X
60	Brighter Choice Community School	31.8%	31.3%		X
61	Dr Jacqueline Peek-Davis School	17.4%	14.7%		
62	Middle School for Academic and Social Excellence	4.1%	0.8%	<input type="checkbox"/> X	X <input type="checkbox"/>
63	Ebbets Field Middle School	5.4%	6.2%		
64	New Heights Middle School	5.2%	5.8%		
65	Ps 770 New American Academy	18.1%	10.6%		
66	School For Human Rights (The)	14.8%	8.6%		X
67	School for Democracy and Leadership	7.1%	4.9%		X
68	Ps 174 Dumont	11.7%	9.2%		X
69	Essence School	1.6%	1.6%	<input type="checkbox"/> X	
70	Fresh Creek School (The)	5.7%	13.6%		
71	Ps 328 Phyllis Wheatley	6.0%	14.8%		X <input type="checkbox"/>
72	School of the Future Brooklyn	7.5%	7.4%		
73	Academy for Young Writers	10.2%	4.4%		
74	Uft Charter School	10.9%	9.7%		
75	Ps 238 Anne Sullivan	19.4%	26.1%		
76	Ps 150 Christopher	9.1%	8.0%	X	<input type="checkbox"/>
77	Ps 165 Ida Posner	9.6%	8.0%		
78	Ps/Is 323	15.7%	13.8%		
79	Ps 327 Dr Rose B English	9.5%	3.5%		
80	Brownsville Collaborative Middle School	3.1%	4.7%		<input type="checkbox"/> X
81	Christopher Avenue Community School	9.4%	13.2%		
82	Knowledge and Power Prep Academy V	22.5%	8.4%		
83	Mott Hall Iv	13.0%	4.0%		X
84	General D Chappie James Middle School of Science	8.7%	0.0%		X
85	Evergreen Middle School for Urban Exploration	6.8%	1.5%		

86	Ps 219 Paul Klapper	40.2%	50.5%		
87	Ps/Ms 42 R Vernam	5.3%	4.7%	X <input type="checkbox"/>	
88	Scholars' Academy	91.0%	90.2%		
89	Academy of Medical Technology - A College Board School	15.2%	6.9%		
90	Queens Collegiate - A College Board School	21.2%	22.7%		
91	Ps/Ms 138 Sunrise	13.5%	10.7%		X
92	Ps/Ms 147 Ronald Mcnair	22.4%	15.7%		X
93	Ps 111 Jacob Blackwell	8.4%	6.3%	<input type="checkbox"/> X	X
94	Academy for New Americans	3.3%	14.3%		X

Appendix B: New York City schools with significant declines in ELA/math proficiency between 2014 and 2015

	School Name	Overall School Prof. in ELA (2014)	Overall School Prof. in Math (2014)	Overall School Prof. in ELA (2015)	Overall School Prof. in Math (2015)	More than 25% Decline in ELA Prof.	More than 25% Decline in Math Prof.
1	Technology, Arts and Sciences Studio School	10.1%	9.8%	10.3%	5.1%		X
2	Life Sciences Secondary School	9.3%	8.1%	14.3%	0.0%		X
3	Great Oaks Charter School	25.6%	55.1%	17.4%	45.5%	X	
4	Ps 145 Bloomingdale School (The)	11.5%	15.3%	7.9%	9.8%	X	X
5	Ps 149 Sojourner Truth	6.0%	10.2%	8.0%	6.6%		X
6	Stem Institute of Manhattan	12.1%	8.8%	4.9%	5.0%	X	X
7	Wadleigh Secondary School For The Performing and Visual Arts	5.4%	3.6%	0.0%	0.0%	X	X
8	Harlem Link Charter School	16.1%	48.6%	13.1%	23.2%		X
9	Jhs 13 Jackie Robinson	4.4%	4.4%	10.0%	3.2%		X
10	Ps 38 Roberto Clemente	9.8%	15.0%	9.0%	11.1%		X
11	Ps 50 Vito Marcantonio	6.6%	8.4%	4.9%	7.3%	X	
12	Ps 96 Joseph Lanzetta	11.4%	9.2%	11.2%	6.0%		X
13	Ps 108 Assemblyman Angelo Del Toro Educational Complex	12.5%	19.2%	15.0%	14.2%		X
14	Bilingual Bicultural School (The)	28.7%	47.0%	21.7%	34.2%		X
15	Isaac Newton Ms for Math and Science	14.2%	11.3%	9.7%	6.4%	X	X
16	Global Neighborhood Secondary School	6.7%	18.1%	8.0%	4.9%		X
17	Ps 36 Margaret Douglas	18.1%	24.1%	10.9%	18.8%	X	
18	Ps 92 Mary Mcleod Bethune	19.8%	23.1%	13.1%	15.5%	X	X
19	Ps 194 Countee Cullen	2.6%	10.3%	7.1%	5.5%		X
20	Ps 200 James Mccune Smith School (The)	10.8%	11.2%	10.5%	8.4%		X
21	Is 286 Renaissance Leadership Academy	12.2%	12.2%	6.3%	3.2%	X	X
22	Academy For Social Action-A College Board School	0.0%	5.6%	14.3%	0.0%		X
23	Choir Academy of Harlem	1.7%	0.0%	0.0%	0.0%	X	
24	Thurgood Marshall Academy For Learning & Social Change	19.6%	26.1%	24.5%	19.4%		X
25	Ps 98 Shorac Kappock	12.3%	25.8%	11.7%	18.7%		X
26	Amistad Dual Language School	29.2%	27.2%	21.3%	24.3%	X	

27	Ps 325	13.5%	20.1%	10.2%	12.2%		X
28	Ms 328 Manhattan Middle School For Scientific Inquiry	4.1%	3.2%	2.6%	3.5%	X	
29	Harbor Heights	0.8%	2.6%	0.0%	5.9%	X	
30	Ps 1 Courtlandt School	14.9%	21.3%	12.4%	13.3%		X
31	Ps 25 Bilingual School	17.9%	27.8%	22.5%	20.4%		X
32	Ps 30 Wilton	12.1%	16.3%	8.1%	13.5%	X	
33	Jhs 162 Lola Rodriguez De Tio	4.3%	6.2%	4.4%	2.9%		X
34	Ps 179	18.5%	24.2%	18.2%	17.5%		X
35	South Bronx Academy for Applied Media	7.4%	2.3%	5.1%	3.5%	X	
36	Young Leaders Elementary School	3.7%	9.4%	2.9%	6.5%		X
37	Performance School	6.3%	9.8%	6.3%	4.6%		X
38	Hostos-Lincoln Academy of Science	14.6%	8.2%	12.4%	4.8%		X
39	Bronx Charter School for Children	15.7%	25.0%	11.1%	14.5%	X	X
40	South Bronx Charter School- Inter Cultures And Arts	25.4%	35.3%	25.0%	20.8%		X
41	Ps 75 School Of Research and Discovery	20.9%	32.2%	12.2%	21.9%	X	X
42	Jhs 123 James M Kiernan	8.3%	3.5%	5.9%	4.6%	X	
43	Ps 146 Edward Collins	15.2%	27.4%	16.1%	17.4%		X
44	Ms 301 Paul L Dunbar	4.8%	1.9%	3.2%	2.6%	X	
45	Urban Assembly for Civic Engagement	8.6%	3.6%	8.9%	2.5%		X
46	Antonia Pantoja Preparatory Academy	18.4%	15.6%	16.4%	8.5%		X
47	Ps/Ms 4 Crotona Park West	14.3%	32.7%	11.7%	23.0%		X
48	Ps 35 Franz Siegel	23.6%	33.2%	13.4%	26.5%	X	
49	Ps 55 Benjamin Franklin	6.8%	14.9%	7.3%	10.7%		X
50	Is 219 New Venture School	4.3%	2.5%	1.1%	1.0%	X	X
51	Is 229 Roland Patterson	5.0%	12.6%	7.6%	4.3%		X
52	Is 303 Leadership & Community Service	15.1%	15.8%	11.2%	14.3%	X	
53	Is 339	5.9%	6.0%	5.0%	3.9%		X
54	Grant Avenue Elementary School	8.3%	18.9%	10.5%	12.3%		X
55	Urban Assembly School for Applied Math and Science	12.3%	17.4%	7.6%	18.4%	X	
56	Ps 32 Belmont	26.6%	27.0%	16.7%	22.0%	X	
57	Thomas C Giordano Middle School 45	16.6%	9.0%	12.6%	6.0%		X
58	Ps 51 Bronx New School	40.7%	48.1%	25.7%	30.3%	X	X

59	Luisa Pineiro Fuentes School Of Science And Discovery	22.4%	32.6%	15.5%	23.6%	X	X
60	Ps 310 Marble Hill	17.1%	33.3%	9.0%	27.1%	X	
61	School For Environmental Citizenship	13.8%	24.5%	15.3%	16.4%		X
62	Ms 390	8.0%	14.0%	8.1%	9.3%		X
63	Angelo Patri Middle School (The)	7.4%	7.4%	8.0%	4.6%		X
64	East Fordham Academy for The Arts	5.7%	4.5%	8.7%	0.9%		X
65	Bronx Community Charter School	30.9%	38.5%	20.0%	30.8%	X	
66	Tech International Charter School	16.4%	15.1%	11.6%	13.3%	X	
67	Ps 76 The Bennington School	16.7%	29.1%	15.9%	21.3%		X
68	Ps 112 Bronxwood	6.5%	6.9%	4.6%	9.3%	X	
69	Ps 160 Walt Disney	23.5%	17.0%	18.8%	12.5%		X
70	Ps 178 Dr Selman Waksman	24.6%	41.3%	20.7%	29.8%		X
71	Forward School (The)	9.8%	6.4%	6.3%	2.5%	X	X
72	Young Scholars Academy of The Bronx	6.2%	11.5%	7.6%	6.6%		X
73	Bronx Charter School For Better Learning	45.5%	67.4%	31.1%	66.8%	X	
74	Equality Charter School	14.1%	32.5%	20.7%	24.0%		X
75	Ps 6 West Farms	7.1%	19.8%	10.8%	13.9%		X
76	Ps 61 Francisco Oller	14.8%	24.0%	9.9%	26.1%	X	
77	Jhs 98 Herman Ridder	4.1%	19.9%	5.9%	10.3%		X
78	Accion Academy	12.5%	4.4%	8.2%	10.4%	X	
79	Urban Assembly School for Wildlife Conservation	18.8%	15.8%	10.3%	13.1%	X	
80	Ps 536	20.0%	18.3%	13.3%	19.4%	X	
81	East Bronx Academy For The Future	7.7%	15.5%	10.5%	10.4%		X
82	Ps 46 Edward C Blum	13.9%	21.6%	16.6%	15.1%		X
83	Ps 54 Samuel C Barnes	14.5%	14.1%	8.1%	9.2%	X	X
84	Dr Susan S Mckinney Secondary School of The Arts	11.1%	8.1%	9.6%	5.9%		X
85	Ps 270 Johann Dekalb	12.3%	16.7%	8.6%	10.3%	X	X
86	Ps 305 Dr Peter Ray	11.0%	13.5%	3.4%	3.3%	X	X
87	Ps 307 Daniel Hale Williams	17.6%	24.0%	11.7%	20.3%	X	
88	Satellite West Middle School	18.5%	17.4%	11.4%	18.0%	X	
89	Urban Assembly Unison School (The)	14.7%	6.7%	10.7%	4.0%	X	X
90	Ms 596 Peace Academy	3.8%	3.7%	2.4%	9.8%	X	
91	Fort Green Preparatory	14.9%	8.2%	10.5%	8.7%	X	

	Academy						
92	Urban Assembly Institute of Math And Science for Young Women	25.3%	18.4%	20.7%	6.9%		X
93	Ps 19 Roberto Clemente	6.8%	13.1%	2.1%	15.7%	X	
94	Ps 147 Issac Remsen	24.1%	25.0%	15.4%	21.3%	X	
95	Ms 582	11.8%	5.7%	20.5%	4.1%		X
96	Lyons Community School	3.5%	3.0%	5.6%	1.2%		X
97	Young Women's Leadership School of Brooklyn	20.5%	26.4%	26.5%	19.5%		X
98	Brooklyn Secondary School for Collaborative Studies	15.7%	6.0%	32.0%	2.0%		X
99	Summit Academy Charter School	12.7%	21.2%	8.3%	17.3%	X	
100	Ps 28 The Warren Prep Academy	14.0%	17.9%	11.1%	9.8%		X
101	Ps 40 George W Carver	24.0%	18.3%	12.1%	13.2%	X	X
102	Ps 308 Clara Cardwell	22.4%	9.6%	15.6%	6.8%	X	X
103	Ps 309 George E Wibecan Preparatory Academy	17.4%	23.9%	12.0%	18.2%	X	
104	Brooklyn Excelsior Charter School	19.0%	25.8%	16.3%	18.9%		X
105	Bedford Stuyvesant New Beginnings Charter School	23.6%	25.3%	15.2%	26.3%	X	
106	Dr Jacqueline Peek-Davis School	14.6%	20.7%	17.4%	14.7%		X
107	Ps 92 Adrian Hegeman	8.7%	14.4%	9.2%	10.6%		X
108	Ps 191 Paul Robeson	16.5%	20.6%	10.3%	27.3%	X	
109	Middle School For Academic And Social Excellence	2.6%	1.3%	4.1%	0.8%		X
110	Ps 397 Foster-Laurie	23.6%	17.5%	10.5%	14.3%	X	
111	Ps 398 Walter Weaver	15.7%	23.6%	15.3%	14.7%		X
112	Ps 399 Stanley Eugene Clarke	23.2%	29.5%	18.3%	21.7%		X
113	New Heights Middle School	6.9%	0.9%	5.2%	5.8%	X	
114	Ps 770 New American Academy	21.8%	18.2%	18.1%	10.6%		X
115	School For Democracy and Leadership	8.3%	9.7%	7.1%	4.9%		X
116	Explore Charter School	23.1%	52.9%	16.7%	34.1%	X	X
117	Explore Empower Charter School	14.7%	32.0%	16.3%	22.7%		X
118	Explore Exceed Charter School	26.1%	55.5%	10.5%	32.1%	X	X
119	Explore Excel Charter School	17.7%	36.6%	16.3%	26.1%		X
120	Cultural Arts Academy Charter School at Spring Creek	29.8%	13.1%	17.5%	24.4%	X	
121	Essence School	5.2%	5.1%	1.6%	1.6%	X	X

122	Fresh Creek School (The)	15.6%	13.1%	5.7%	13.6%	X	
123	Van Sicien Community Middle School	2.7%	6.3%	2.8%	2.3%		X
124	School of The Future Brooklyn	15.7%	16.2%	7.5%	7.4%	X	X
125	East New York Middle School Of Excellence	10.3%	4.7%	10.8%	3.2%		X
126	Academy for Young Writers	13.7%	5.7%	10.2%	4.4%	X	
127	Uft Charter School	10.5%	17.6%	10.9%	9.7%		X
128	Invictus Preparatory Charter School	15.9%	35.6%	13.6%	21.6%		X
129	Ps 264 Bay Ridge Elementary School for The Arts	42.9%	50.9%	31.1%	53.0%	X	
130	Kingsborough Early College School	30.3%	32.9%	28.3%	21.5%		X
131	Ps 198	31.2%	22.1%	22.0%	24.4%	X	
132	Ps 251 Paerdegat	17.0%	16.6%	11.3%	19.3%	X	
133	Ps 269 Nostrand	15.6%	11.7%	8.5%	7.8%	X	X
134	Is 381	19.5%	22.0%	24.8%	15.6%		X
135	Ps 41 Francis White	8.5%	13.4%	8.7%	8.0%		X
136	Ps/Is 155 Nicholas Herkimer	10.9%	13.8%	9.6%	10.2%		X
137	Ps 184 Newport	12.7%	20.6%	10.2%	12.4%		X
138	Ps 327 Dr Rose B English	12.3%	9.6%	9.5%	3.5%		X
139	Knowledge and Power Prep Academy V	9.8%	11.3%	22.5%	8.4%		X
140	Mott Hall Iv	15.6%	7.8%	13.0%	4.0%		X
141	General D Chappie James Elementary School Of Science	12.2%	19.1%	8.5%	19.1%	X	
142	General D Chappie James Middle School Of Science	5.6%	2.9%	8.7%	0.0%		X
143	Brooklyn Environmental Exploration School (Bees)	13.3%	2.3%	5.5%	5.5%	X	
144	Mott Hall Bridges Academy	16.1%	18.8%	12.6%	12.0%		X
145	Ps 75 Mayda Cortiella	14.1%	21.3%	8.7%	19.4%	X	
146	Ps 86 The Irvington	20.8%	23.9%	11.1%	19.5%	X	
147	Ps 106 Edward Everett Hale	9.3%	17.3%	6.3%	18.6%	X	
148	Ps 145 Andrew Jackson	14.5%	23.9%	15.6%	17.6%		X
149	Jhs 162 The Willoughby	10.5%	16.5%	10.1%	10.4%		X
150	Ps 299 Thomas Warren Field School	22.5%	32.4%	16.1%	30.4%	X	
151	Bushwick Ascend Charter School	30.9%	34.9%	21.5%	35.9%	X	
152	Ps 14 Fairview	23.5%	35.0%	17.6%	28.1%	X	
153	Ps 130	50.9%	77.4%	35.1%	57.9%	X	X
154	Active Learning Elementary School (The)	80.9%	83.8%	55.9%	80.9%	X	

155	Ps 104 The Bays Water	19.9%	27.1%	13.1%	19.5%	X	X
156	Ps 106	11.7%	12.6%	8.9%	8.6%		X
157	Ps 273	35.7%	58.1%	26.2%	39.0%	X	X
158	New York City Academy For Discovery	33.5%	43.7%	22.0%	37.8%	X	
159	Waterside School For Leadership	15.7%	9.2%	11.4%	10.1%	X	
160	Peninsula Preparatory Academy Charter School	27.2%	41.7%	28.4%	28.0%		X
161	Jhs 8 Richard S Grossley	11.7%	9.6%	12.1%	4.5%		X
162	Emerson School (The)	13.4%	23.0%	9.4%	14.5%	X	X
163	Rochdale Early Advantage Charter School	21.5%	21.9%	15.0%	30.0%	X	
164	Ps 136 Roy Wilkins	27.5%	25.2%	22.7%	15.0%		X
165	Ps 181 Brookfield	21.7%	32.1%	23.6%	21.7%		X
166	Is 192 The Linden	11.2%	9.7%	16.7%	6.7%		X
167	Ps 195 William Haberle	26.6%	19.3%	21.5%	13.9%		X
168	Is 238 Susan B Anthony Academy	17.3%	18.7%	16.0%	12.3%		X
169	Ps 251	36.2%	50.7%	38.5%	29.2%		X
170	Queens United Middle School	17.1%	14.5%	15.0%	10.3%		X
171	Pathways College Preparatory School: A College Board School	22.4%	23.0%	23.4%	11.4%		X
172	Ps 111 Jacob Blackwell	8.5%	9.2%	8.4%	6.3%		X
173	Ps 171 Peter G Van Alst	17.9%	27.6%	11.9%	23.8%	X	
174	Ps 13 M L Lindenmeyer	35.1%	42.4%	24.9%	38.8%	X	
175	Ps 18 John G Whittier	13.9%	22.1%	9.9%	18.2%	X	
176	Ps 19 The Curtis School	27.2%	34.1%	19.3%	25.4%	X	X
177	Ps 20 Port Richmond	9.1%	22.0%	5.1%	16.8%	X	
178	Ps 39 Francis J Murphy Jr	41.7%	46.9%	30.0%	36.4%	X	

Appendix C: Failing schools (math) in 2015 with favorable ratings on the 2014 School Quality Report

	School Name	% Pass ELA	% Pass Math	Quality Review Rating	Progress Rating	Achievement Rating	Environment Rating	Closing the Achievement Gap Rating
1	Ps 34 Franklin D Roosevelt	27.5%	23.6%	Proficient	Meeting Target	Exceeding Target	Meeting Target	Meeting Target
2	Ps 76 A Phillip Randolph	19.3%	16.5%	Proficient	Exceeding Target	Meeting Target	Meeting Target	Meeting Target
3	Global Technology Preparatory	18.1%	24.3%	Proficient	Exceeding Target	Meeting Target	Exceeding Target	Meeting Target
4	Global Neighborhood Secondary School	8.0%	4.9%	Proficient	Meeting Target	Meeting Target	Exceeding Target	Meeting Target
5	Thurgood Marshall Academy for Learning & Social Change	24.5%	19.4%	Proficient	Exceeding Target	Meeting Target	Exceeding Target	Exceeding Target
6	Is 218 Salome Urena	8.9%	5.9%	Proficient	Meeting Target	Meeting Target	Meeting Target	Meeting Target
7	Amistad Dual Language School	21.3%	24.3%	Well Developed	Meeting Target	Meeting Target	Meeting Target	Exceeding Target
8	Middle School 322	9.6%	13.1%	Proficient	Exceeding Target	Meeting Target	Meeting Target	Meeting Target
9	Ps 25 Bilingual School	22.5%	20.4%	Proficient	Exceeding Target	Meeting Target	Meeting Target	Meeting Target
10	Ps 43 Jonas Bronck	14.3%	23.0%	Proficient	Exceeding Target	Meeting Target	Meeting Target	Meeting Target
11	South Bronx Preparatory - A College Boar	11.1%	18.7%	Proficient	Exceeding Target	Meeting Target	Meeting Target	Exceeding Target
12	Ps 62 Inocencio Casanova	9.2%	18.6%	Proficient	Meeting Target	Meeting Target	Meeting Target	Meeting Target
13	Ps 28 Mount Hope	16.1%	24.4%	Proficient	Exceeding Target	Meeting Target	Meeting Target	Meeting Target
14	Is 303 Leadership & Comm Service	11.2%	14.3%	Proficient	Exceeding Target	Exceeding Target	Exceeding Target	Exceeding Target
15	Ps 32 Belmont	16.7%	22.0%	Well Developed	Exceeding Target	Exceeding Target	Meeting Target	Exceeding Target
16	Ps 159 Luis	18.7%	22.3%	Proficient	Exceeding	Meeting	Exceeding	Meeting Target

	Mumoz Marin Biling				Target	Target	Target	
17	New School for Leadership and Journalism	23.8%	22.7%	Proficient	Exceeding Target	Meeting Target	Meeting Target	Exceeding Target
18	Ps 396	16.8%	22.9%	Proficient	Exceeding Target	Meeting Target	Meeting Target	Exceeding Target
19	Creston Academy	15.8%	18.8%	Proficient	Exceeding Target	Meeting Target	Meeting Target	Exceeding Target
20	One World Middle School at Edenwald	13.7%	13.9%	Proficient	Meeting Target	Meeting Target	Exceeding Target	Meeting Target
21	Ms 129 Academy of Independent Learning	13.7%	15.3%	Proficient	Exceeding Target	Exceeding Target	Exceeding Target	Meeting Target
22	Esmt-Is 190	10.9%	11.8%	Proficient	Exceeding Target	Meeting Target	Meeting Target	Exceeding Target
23	Ms 582	20.5%	4.1%	Proficient	Meeting Target	Meeting Target	Meeting Target	Meeting Target
24	Young Women'S Leadership School Of Brook	26.5%	19.5%	Well Developed	Exceeding Target	Meeting Target	Meeting Target	Meeting Target
25	School Of Integrated Learning (The)	10.6%	24.0%	Proficient	Meeting Target	Meeting Target	Meeting Target	Meeting Target
26	Ps 375 Jackie Robinson School	10.5%	14.3%	Proficient	Meeting Target	Meeting Target	Meeting Target	Meeting Target
27	Ps 397 Foster-Laurie	14.8%	8.6%	Proficient	Meeting Target	Meeting Target	Exceeding Target	Meeting Target
28	Is 303 Herbert S Eisenberg	15.4%	19.8%	Proficient	Meeting Target	Meeting Target	Meeting Target	Meeting Target
29	Ps 197-The Kings Highway Academy	22.0%	24.4%	Proficient	Meeting Target	Meeting Target	Meeting Target	Meeting Target
30	Ps 222 Katherine R Snyder	14.8%	18.6%	Proficient	Meeting Target	Meeting Target	Meeting Target	Meeting Target
31	Ps/Is 45 Horace E Greene	11.1%	19.5%	Well Developed	Meeting Target	Meeting Target	Exceeding Target	Meeting Target
32	Waterside Children'S Studio School	29.2%	24.4%	Proficient	Meeting Target	Meeting Target	Exceeding Target	Meeting Target
33	Ps 131 Abigail Adams	22.7%	15.0%	Proficient	Exceeding Target	Meeting Target	Meeting Target	Exceeding Target
34	Ps 176 Cambria	16.7%	6.7%	Proficient	Meeting	Meeting	Exceeding	Meeting Target

	Heights				Target	Target	Target	
--	---------	--	--	--	--------	--------	--------	--

Appendix D: Failing schools (ELA) in 2015 with favorable ratings on the 2014 School Quality Report

	School Name	Overall School Prof. in ELA (2015)	Overall School Prof. in Math (2015)	Quality Review Rating (2014)	Progress Rating (2014)	Achievement Rating (2014)	Environment Rating (2014)	Closing the Achievement Gap Rating (2014)
1	Ps 64 Robert Simon	13.7%	26.1%	Proficient	Exceeding Target	Meeting Target	Exceeding Target	Exceeding Target
2	Ps 76 A Phillip Randolph	19.3%	16.5%	Proficient	Exceeding Target	Meeting Target	Meeting Target	Meeting Target
3	Ps 206 Jose Celso Barbosa	12.7%	25.7%	Proficient	Meeting Target	Exceeding Target	Exceeding Target	Meeting Target
4	Global Technology Preparatory	18.1%	24.3%	Proficient	Exceeding Target	Meeting Target	Exceeding Target	Meeting Target
5	Global Neighborhood Secondary School	8.0%	4.9%	Proficient	Meeting Target	Meeting Target	Exceeding Target	Meeting Target
6	Thurgood Marshall Academy For Learning & Social Change	24.5%	19.4%	Proficient	Exceeding Target	Meeting Target	Exceeding Target	Exceeding Target
7	Ps 189	16.8%	26.3%	Proficient	Exceeding Target	Meeting Target	Meeting Target	Meeting Target
8	Ps/Is 210 21st Century Academy For Commu	20.5%	29.0%	Proficient	Meeting Target	Meeting Target	Exceeding Target	Meeting Target
9	Is 218 Salome Urena	8.9%	5.9%	Proficient	Meeting Target	Meeting Target	Meeting Target	Meeting Target
10	Amistad Dual Language School	21.3%	24.3%	Well Developed	Meeting Target	Meeting Target	Meeting Target	Exceeding Target
11	Middle School 322	9.6%	13.1%	Proficient	Exceeding Target	Meeting Target	Meeting Target	Meeting Target
12	Ps 25 Bilingual School	22.5%	20.4%	Proficient	Exceeding Target	Meeting Target	Meeting Target	Meeting Target
13	Ps 43 Jonas Bronck	14.3%	23.0%	Proficient	Exceeding Target	Meeting Target	Meeting Target	Meeting Target
14	Academy Of Applied Mathematics	19.0%	31.1%	Proficient	Meeting Target	Meeting Target	Exceeding Target	Meeting Target
15	South Bronx Preparatory - A	11.1%	18.7%	Proficient	Exceeding Target	Meeting Target	Meeting Target	Exceeding Target

	College Board							
16	Ps 62 Inocensio Casanova	9.2%	18.6%	Proficient	Meeting Target	Meeting Target	Meeting Target	Meeting Target
17	Ps 28 Mount Hope	16.1%	24.4%	Proficient	Exceeding Target	Meeting Target	Meeting Target	Meeting Target
18	Ps 35 Franz Siegel	13.4%	26.5%	Proficient	Meeting Target	Exceeding Target	Meeting Target	Meeting Target
19	Kappa	23.9%	34.0%	Proficient	Meeting Target	Meeting Target	Meeting Target	Meeting Target
20	Is 303 Leadership & Community Service	11.2%	14.3%	Proficient	Exceeding Target	Exceeding Target	Exceeding Target	Exceeding Target
21	Ps 8 Issac Varian	24.1%	34.6%	Proficient	Meeting Target	Exceeding Target	Meeting Target	Meeting Target
22	Ps 32 Belmont	16.7%	22.0%	Well Developed	Exceeding Target	Exceeding Target	Meeting Target	Exceeding Target
23	Ps 37 Multiple Intelligence School	17.8%	26.6%	Proficient	Meeting Target	Meeting Target	Meeting Target	Meeting Target
24	Ps 159 Luis Mumoz Marin Biling	18.7%	22.3%	Proficient	Exceeding Target	Meeting Target	Exceeding Target	Meeting Target
25	New School For Leadership And Journalism	23.8%	22.7%	Proficient	Exceeding Target	Meeting Target	Meeting Target	Exceeding Target
26	Bronx Dance Academy School	24.5%	28.7%	Well Developed	Exceeding Target	Meeting Target	Meeting Target	Meeting Target
27	Ps 340	15.2%	25.9%	Well Developed	Exceeding Target	Exceeding Target	Exceeding Target	Meeting Target
28	Ps 396	16.8%	22.9%	Proficient	Exceeding Target	Meeting Target	Meeting Target	Exceeding Target
29	Creston Academy	15.8%	18.8%	Proficient	Exceeding Target	Meeting Target	Meeting Target	Exceeding Target
30	Ps 96 Richard Rodgers	24.3%	33.9%	Proficient	Exceeding Target	Meeting Target	Meeting Target	Meeting Target
31	One World Middle School At Edenwald	13.7%	13.9%	Proficient	Meeting Target	Meeting Target	Exceeding Target	Meeting Target
32	Ms 129 Academy Of Independent Learning A	13.7%	15.3%	Proficient	Exceeding Target	Exceeding Target	Exceeding Target	Meeting Target
33	Esmt-Is 190	10.9%	11.8%	Proficient	Exceeding Target	Meeting Target	Meeting Target	Exceeding Target
34	Ps 17 Henry D Woodworth	24.7%	38.6%	Proficient	Exceeding Target	Exceeding Target	Meeting Target	Meeting Target
35	Ps 120 Carlos	10.8%	35.1%	Well Developed	Meeting	Meeting Target	Exceeding	Meeting Target

	Tapia				Target		Target	
36	Ms 582	20.5%	4.1%	Proficient	Meeting Target	Meeting Target	Meeting Target	Meeting Target
37	Ps 15 Patrick F Daly	20.8%	34.4%	Proficient	Exceeding Target	Exceeding Target	Meeting Target	Exceeding Target
38	Ms 267 Math, Science & Technology	24.1%	25.3%	Proficient	Exceeding Target	Meeting Target	Meeting Target	Meeting Target
39	Brighter Choice Community School	17.1%	25.7%	Well Developed	Meeting Target	Meeting Target	Meeting Target	Meeting Target
40	School Of Integrated Learning (The)	10.6%	24.0%	Proficient	Meeting Target	Meeting Target	Meeting Target	Meeting Target
41	Ps 375 Jackie Robinson School	10.5%	14.3%	Proficient	Meeting Target	Meeting Target	Meeting Target	Meeting Target
42	Ps 397 Foster-Laurie	14.8%	8.6%	Proficient	Meeting Target	Meeting Target	Exceeding Target	Meeting Target
43	Ps 108 Sal Abbracciamento	23.1%	35.9%	Proficient	Meeting Target	Meeting Target	Meeting Target	Meeting Target
44	Ps/Is 30 Mary White Ovington	23.4%	26.6%	Proficient	Exceeding Target	Meeting Target	Exceeding Target	Meeting Target
45	Ps 204 Vince Lombardi	22.9%	43.7%	Proficient	Exceeding Target	Meeting Target	Meeting Target	Meeting Target
46	Jhs 220 John J Pershing	24.1%	46.7%	Proficient	Meeting Target	Meeting Target	Meeting Target	Meeting Target
47	School For Future Leaders (The)	15.3%	27.9%	Well Developed	Meeting Target	Meeting Target	Meeting Target	Meeting Target
48	Is 228 David A Boody	19.4%	26.1%	Proficient	Meeting Target	Meeting Target	Meeting Target	Exceeding Target
49	Is 303 Herbert S Eisenberg	15.4%	19.8%	Proficient	Meeting Target	Meeting Target	Meeting Target	Meeting Target
50	Jhs 14 Shell Bank	22.6%	26.5%	Proficient	Meeting Target	Meeting Target	Exceeding Target	Exceeding Target
51	Ps 197-The Kings Highway Academy	22.0%	24.4%	Proficient	Meeting Target	Meeting Target	Meeting Target	Meeting Target
52	Ps 198	23.6%	30.6%	Proficient	Exceeding Target	Meeting Target	Exceeding Target	Exceeding Target
53	Ps 222 Katherine R Snyder	14.8%	18.6%	Proficient	Meeting Target	Meeting Target	Meeting Target	Meeting Target
54	Eagle Academy For Young Men li	21.7%	25.5%	Proficient	Exceeding Target	Meeting Target	Meeting Target	Exceeding Target
55	Ps/Is 45 Horace E Greene	11.1%	19.5%	Well Developed	Meeting Target	Meeting Target	Exceeding Target	Meeting Target
56	Ps 90 Horace	20.8%	26.5%	Proficient	Meeting	Meeting Target	Exceeding	Meeting Target

	Mann				Target		Target	
57	Jhs 217 Robert A Van Wyck	22.1%	28.3%	Proficient	Meeting Target	Meeting Target	Meeting Target	Meeting Target
58	Ps 131 Abigail Adams	22.7%	15.0%	Proficient	Exceeding Target	Meeting Target	Meeting Target	Exceeding Target
59	Ps 176 Cambria Heights	16.7%	6.7%	Proficient	Meeting Target	Meeting Target	Exceeding Target	Meeting Target
60	Is 10 Horace Greeley	20.2%	28.5%	Proficient	Meeting Target	Meeting Target	Meeting Target	Meeting Target
61	Is 7 Elias Bernstein	24.9%	38.8%	Proficient	Meeting Target	Meeting Target	Meeting Target	Meeting Target